

THE CORPORATION OF THE TOWNSHIP OF STRONG

BY-LAW 2013-010

SEASONALLY MAINTAINED ROAD

**Being a by-law setting out those roads and the portion thereof,
That are seasonally maintained by the Municipality.**

WHEREAS the Municipality has many hundreds of kilometers of roads which are, by law, classified as “public highways”;

WHEREAS only a small percentage of these roads are year round maintained by the Municipality for public use;

AND WHEREAS the Municipality has a limited number of roads to which it provides limited maintenance for the summer season only and which are the subject matter of this By-law.

BE IN ENACTED AS A BY-LAW OF THE CORPORATION OF THE TOWNSHIP OF STRONG AS FOLLOWS:

1. Definitions:

The following definitions apply to seasonally maintained roads:

1. Seasonally Maintained Road:

A “seasonally maintained road” is a road, or portion thereof, which receives limited seasonal maintenance for a specified calendar period. This maintained portion is considered a Class 6 road under R.R.). 1990, Reg 6013/06.

2. Season

A “season” for the purpose of a seasonally maintained road is from the 1st day of June in the calendar year to the 1st day of September in the same calendar year.

3. Limited Maintenance

“Limited Maintenance” means, or consists of:

- a) minimal gravelling, grading and ditching sufficient to permit passage during the seasonal period;
- b) patrolled twice a month
- c) does not include major repairs to culverts or bridges. If such repairs are required for public safety, Council may eliminate all or a portion of the seasonal road from its seasonal maintenance schedule;
- d) a service standard below that which is provided for a year round Municipally maintained roads.

2. Schedule: Seasonally Maintained Roads

Attached as Schedule”A’ is a list of the roads or the portions thereof, which are seasonally maintained under this By-law. Attached to each is a map/sketch of part of the road and the portion thereof, which is seasonally maintained.

3. “At User’s Risk”

Since a seasonally maintained road is maintained at a lower standard, the use of these roads is at “user’s risk”.

THE CORPORATION OF THE TOWNSHIP OF STRONG

BY-LAW 2013-010

SEASONALLY MAINTAINED ROAD

4. **Signage**

At the entrance of the roads which are approved for seasonal maintenance, there shall be posted the following signage:

*“Seasonally Maintained Road June 1st – September 1st only.
Use at your own risk.*

THIS BY-LAW READ A FIRST, SECOND AND THIRD TIME, AND FINALLY PASSED IN OPEN COUNCIL THIS 22ND DAY OF JANUARY 2013.

**THE CORPORATION OF THE
TOWNSHIP OF STRONG**

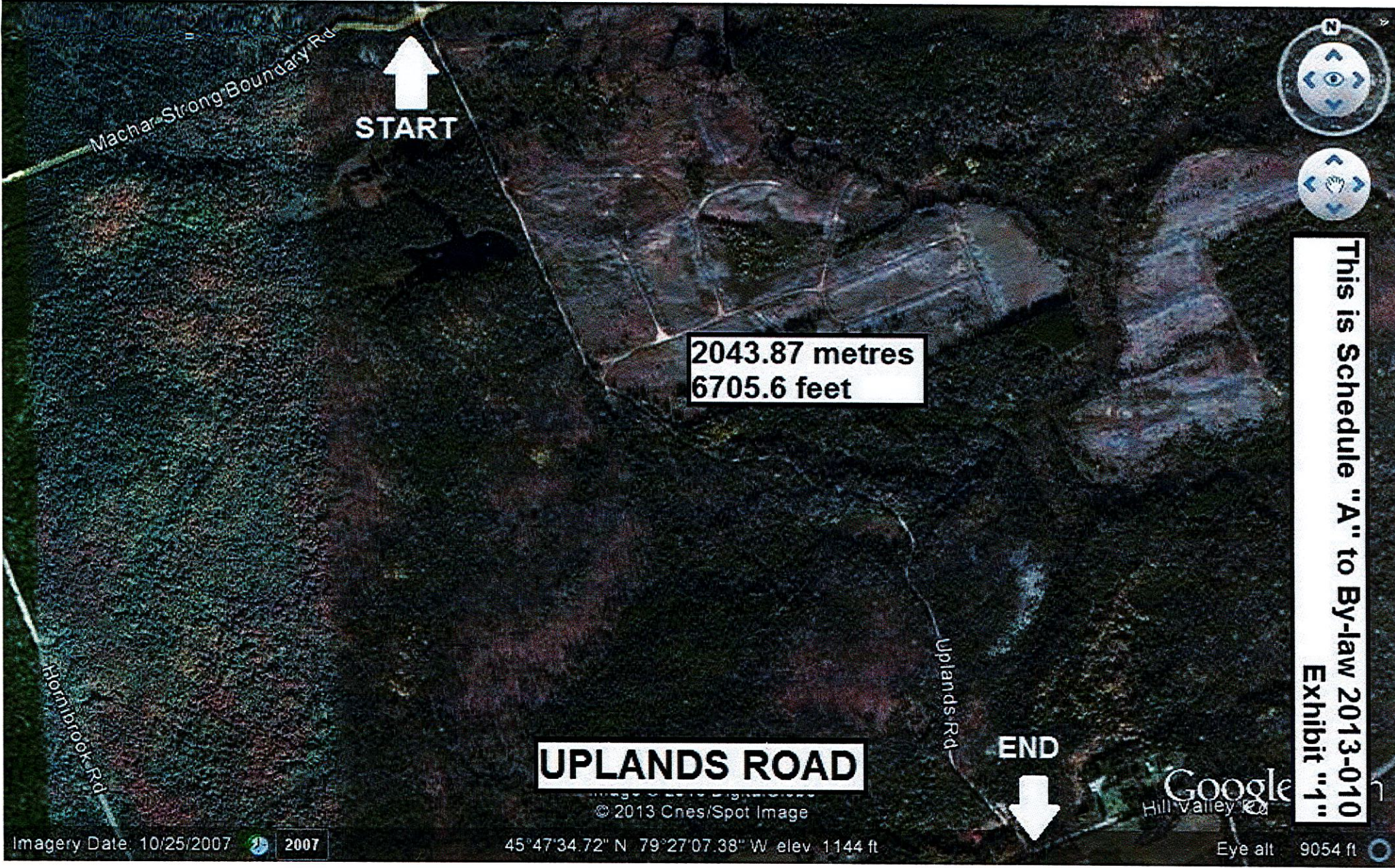
Christine Ellis, Mayor c/s

Linda Maurer, Clerk/Treasurer

SCHEDULE “A”

SEASONALLY MAINTAINED ROADS

- 1. Uplands Road (see map/sketch Exhibit “1”)** –at Concession 13 Lot 14 on the west side of the road, Lot 13 on the east side of the road extending to Concession 14 and Lot 13 on the west side and Lot 14 on the east side and extends at the Machar Strong Boundary Road.
- 2. Old Ranch Road(see map/sketch Exhibit “2”)-** Concession 9 Lots 31 and 32 on the north side of the road, Concession 8 lot 31 and 32 on the south side of the road.
- 3. Trudgeons Road (see map/sketch Exhibit “3”)** –Concession 7 Lots 31 and 32 on the north side, Concession 6 Lots 31 and 32.



Machar-Strong Boundary Rd

START

2043.87 metres
6705.6 feet

UPLANDS ROAD

END

Uplands Rd

Hornibrook Rd

Google
Hill Valley CA

This is Schedule "A" to By-law 2013-010
Exhibit "1"

Imagery Date: 10/25/2007 2007

45°47'34.72" N 79°27'07.38" W elev 1144 ft

Eye alt 9054 ft



809 metres
2,657 feet

Old Ranch Rd

Evensley Rd

START

END

OLD RANCH ROAD

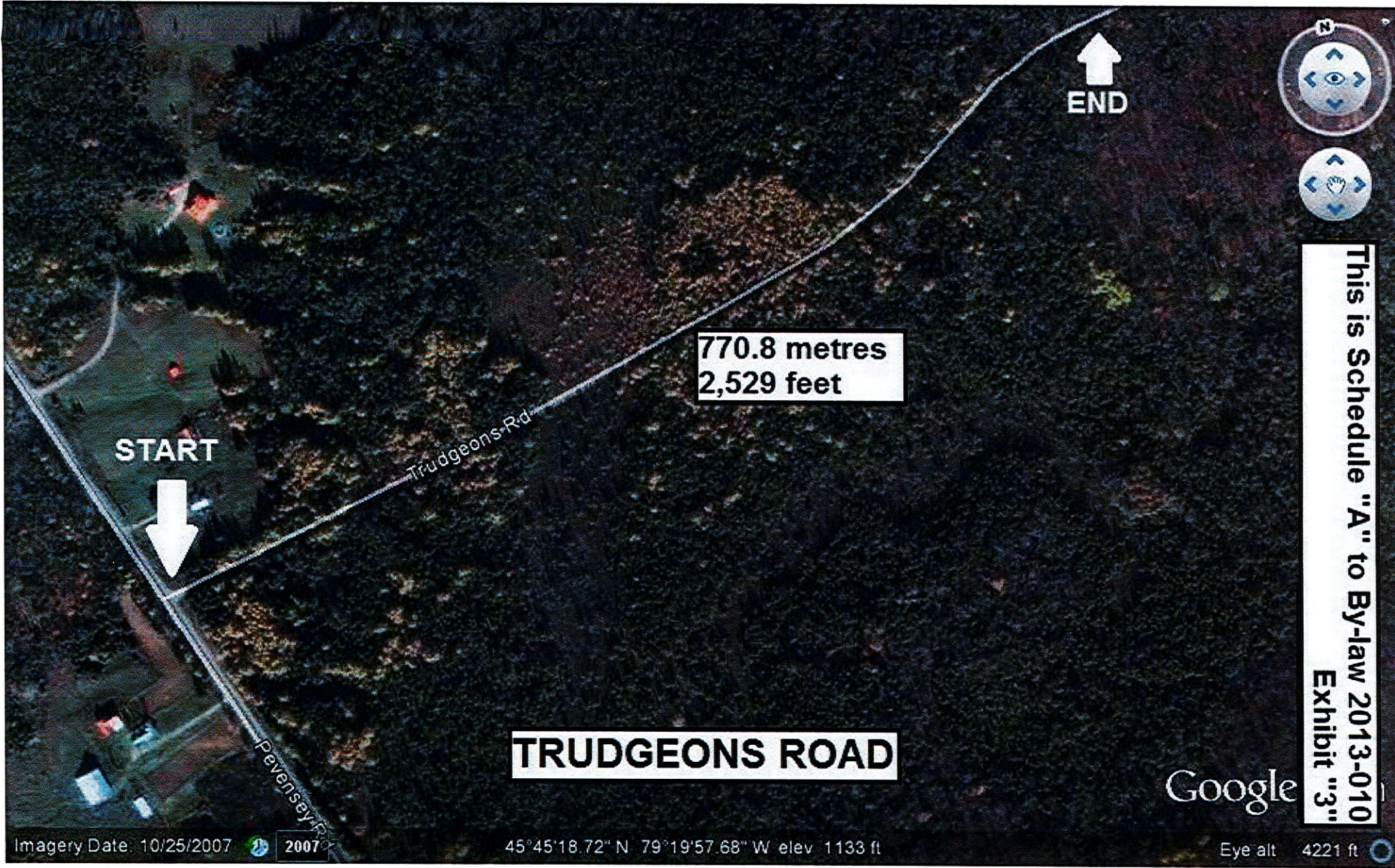
This is Schedule "A" to By-law 2013-010
Exhibit "2"

Google

Imagery Date: 10/25/2007 2007

45°46'22.88" N 79°20'09.67" W elev 1243 ft

Eye alt 10155 ft



START



END

770.8 metres
2,529 feet

TRUDGEONS ROAD

This is Schedule "A" to By-law 2013-010
Exhibit "3"

Google

Imagery Date: 10/25/2007 2007

45°45'18.72" N 79°19'57.68" W elev 1133 ft

Eye alt 4221 ft